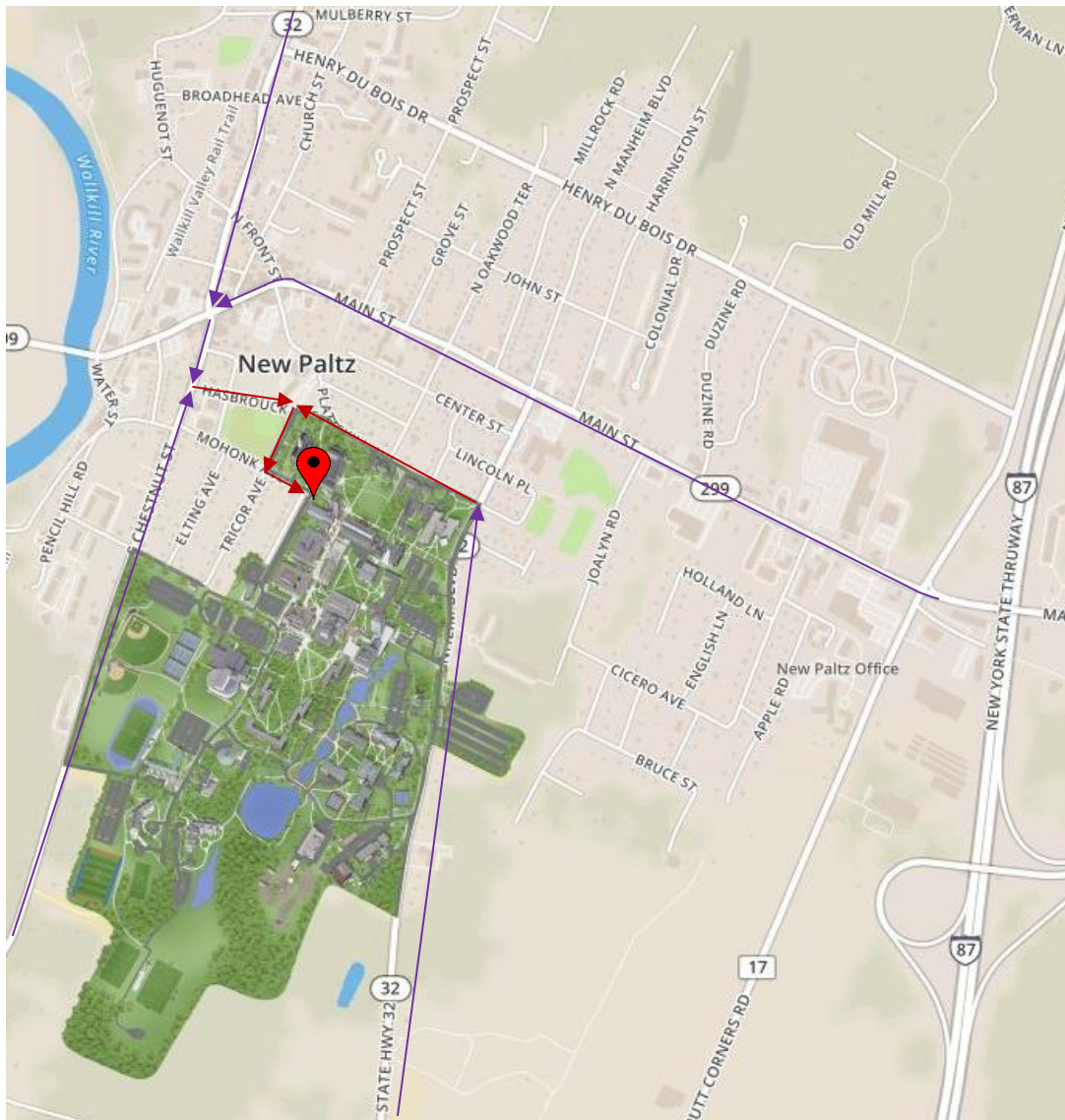


## Directions to SUNY New Paltz – Speech, Language and Hearing Center (Humanities Building)



### From NYS Thruway I-87 Exit 18:

- Turn left at the light after the toll booth onto Rt. 299-Main St. Travel approx.. 1.2 miles
- Turn left onto S. Chestnut St./State Route 208.
- Take the second left onto Hasbrouck Ave.
- Take the second right onto Tricor Ave.
- Turn left onto Mohonk Ave.
- At end turn right onto Sojourner Way to enter the parking areas.

### From the East/Mid-Hudson Bridge (Poughkeepsie):

- Take the first exit after the bridge to Rt. 9W North and travel approx. 2.5 miles.
- Turn left onto Rt. 299. Continue approx.. 6.2 miles to New Paltz.
- Turn left onto S. Chestnut St./State Route 208.
- Take the second left onto Hasbrouck Ave.
- Take the second right onto Tricor Ave.
- Turn left onto Mohonk Ave.
- At end turn right onto Sojourner Way to enter the parking areas.

### From State Route 32 North (Rosendale/Tillson):

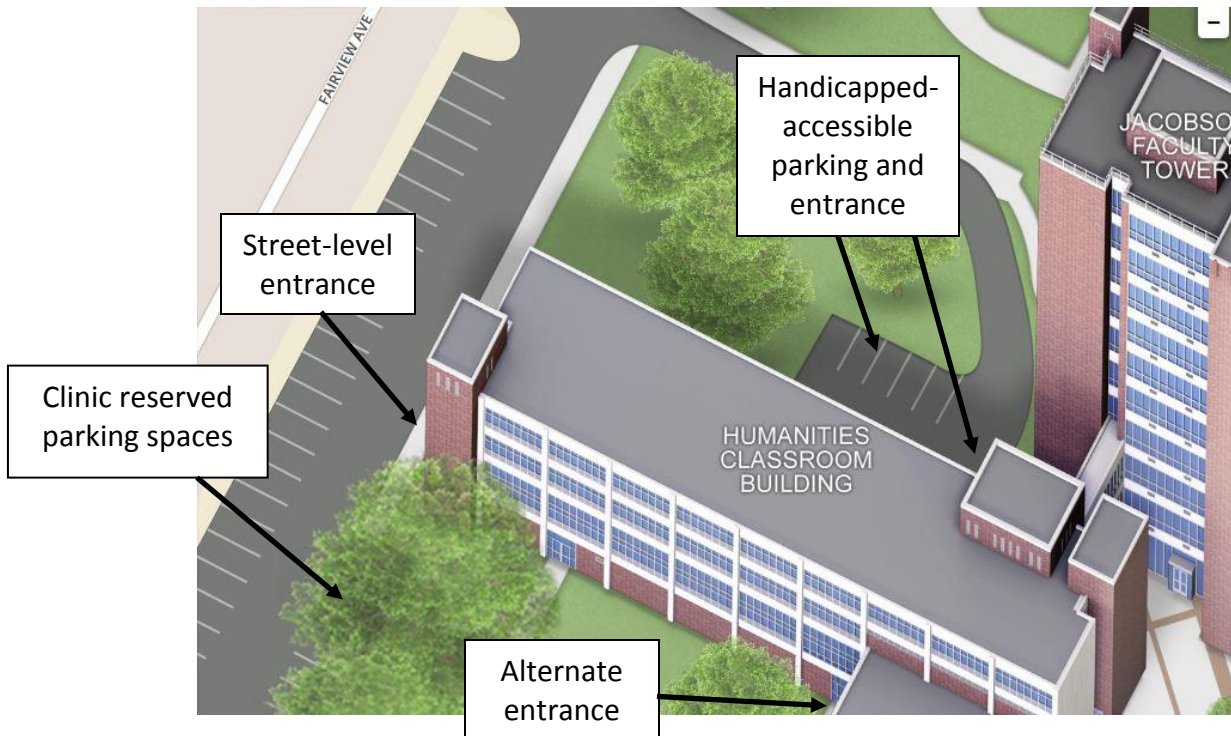
- Turn left onto Hasbrouck Ave. (second left after crossing Main St.)
- Take the second right onto Tricor Ave.
- Turn left onto Mohonk Ave.
- At end turn right onto Sojourner Way to enter the parking areas.

### From State Route 32 South (Plattekill):

- Turn left onto Plattekill Ave. (a few blocks before you reach Main St.)
- Turn left onto Hasbrouck Ave.
- Turn left onto Mohonk Ave.
- At end turn right onto Sojourner Way to enter the parking areas.

### From State Route 208 South (Gardiner):

- Turn right onto Hasbrouck Ave. (two blocks before you reach Main St.)
- Take the second right onto Tricor Ave.
- Turn left onto Mohonk Ave.
- Turn right onto Sojourner Way to enter the parking areas.



**Handicapped parking:** Please use a handicapped parking space if you have a New York State permit or license plate that allows you to do so. The Center is not responsible for tickets received when using a handicapped parking space illegally.

**Designated parking:** There are designated clinic visitor parking spaces near the building entrance. If none of those spaces are available, proceed further down the lot until you find a space.

**Parking permit:** Display the orange client parking permit on your dashboard when you park. *If you do not display the parking permit, and you are ticketed by campus police, you will be required to pay the fine.* Please notify the department secretary right away if you receive a parking ticket.

**Entering the building:**

- At the street level building entrance, there is a blue sign for the Speech, Language & Hearing Center. Go through that entrance and up one flight of stairs. Proceed to the receptionist and waiting area in room 9B, down the hall and on the right.
- At the handicapped-accessible entrance, go through the door and continue down the hall to the receptionist and waiting area in room 9B.